

Accessing Omega (With X-windows support)

On Linux

You can access omega with x-windows support using the command

```
ssh -X <net-id>@omega.uta.edu
```

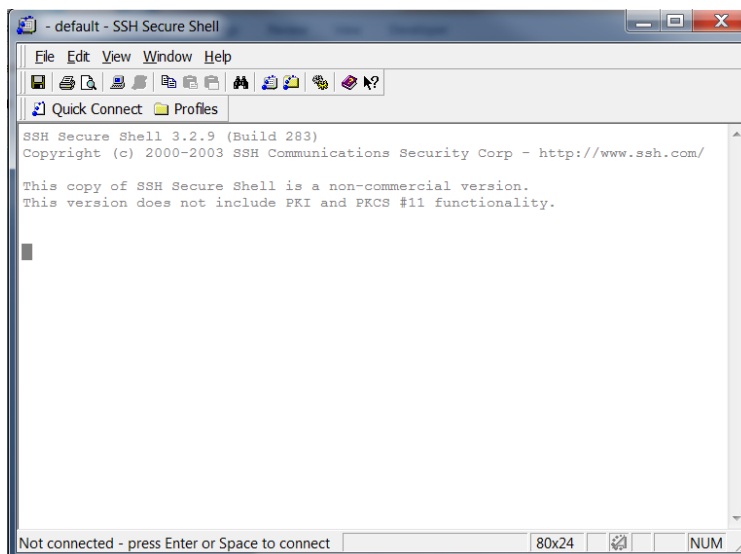
On Windows (using SSH Client and Xming)

Download and install the SSH Client from <http://www.uta.edu/oit/cs/software/downloads.php>.

Download and install Xming from <http://sourceforge.net/projects/xming/>.

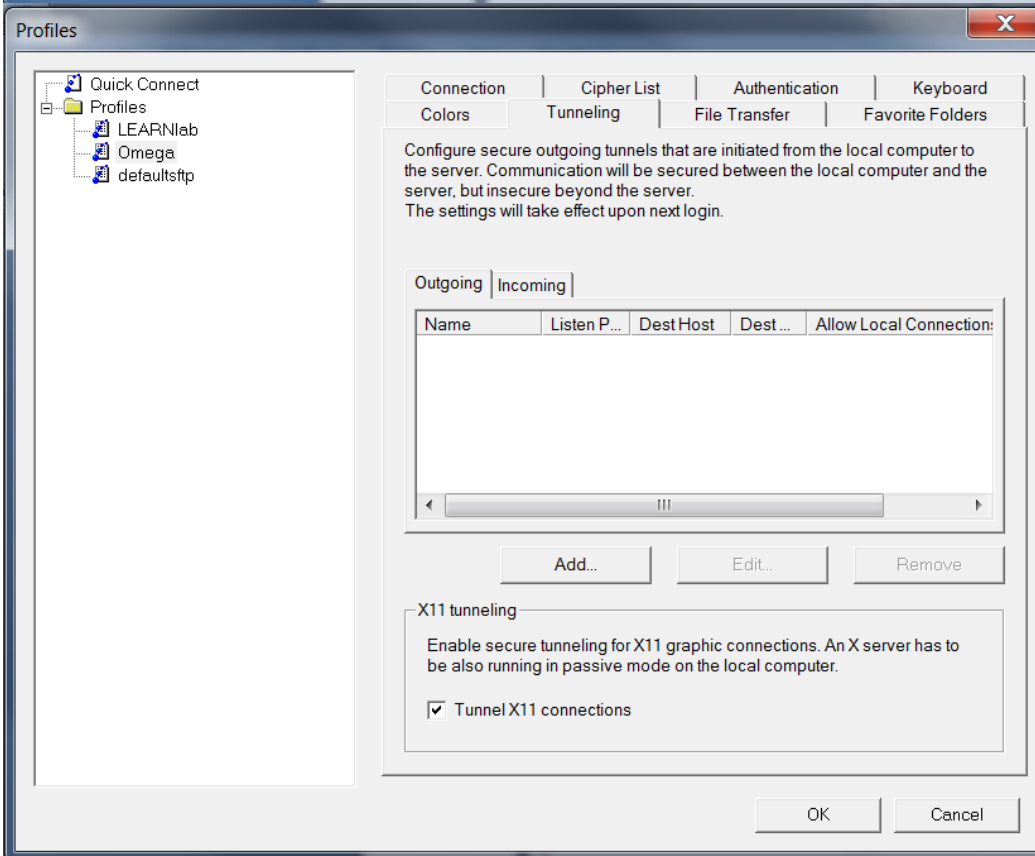
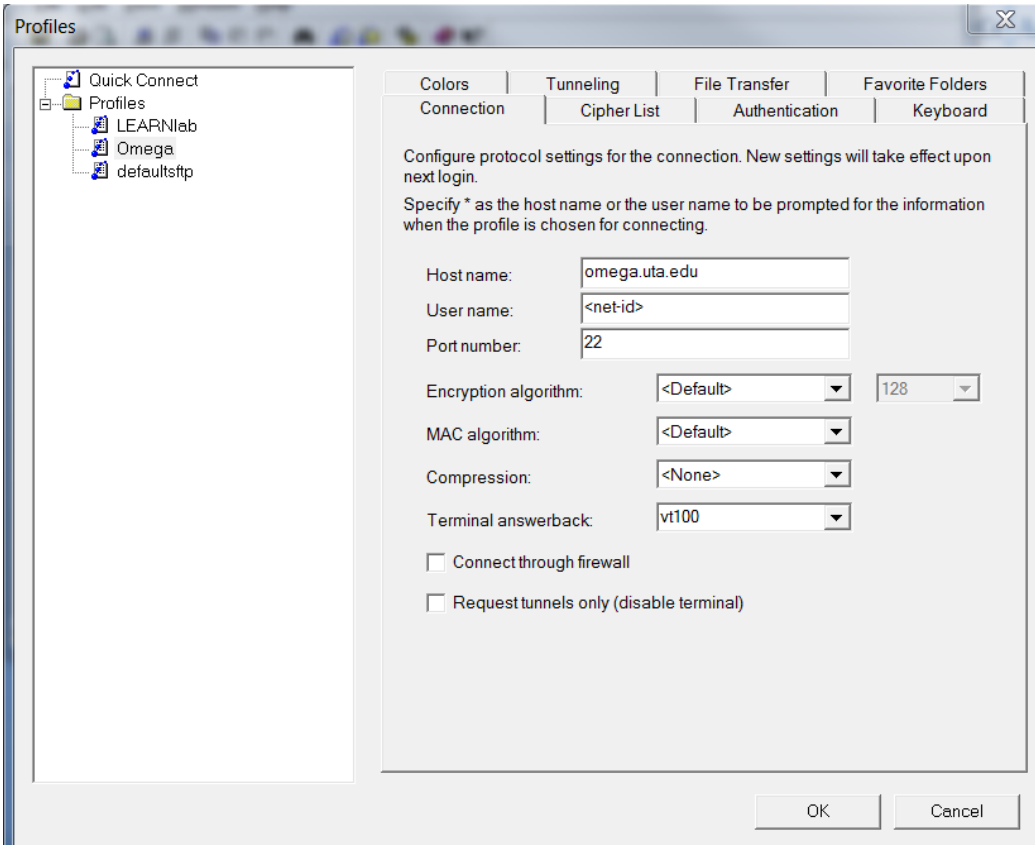
Start Xming using XLaunch or default Xming shortcut. (You will need to do this every time you restart your computer before using SSH Client)

Startup SSH Client



Add a new Profile using Profiles → Add Profile. Then go to profile settings using Profiles → Edit Profiles

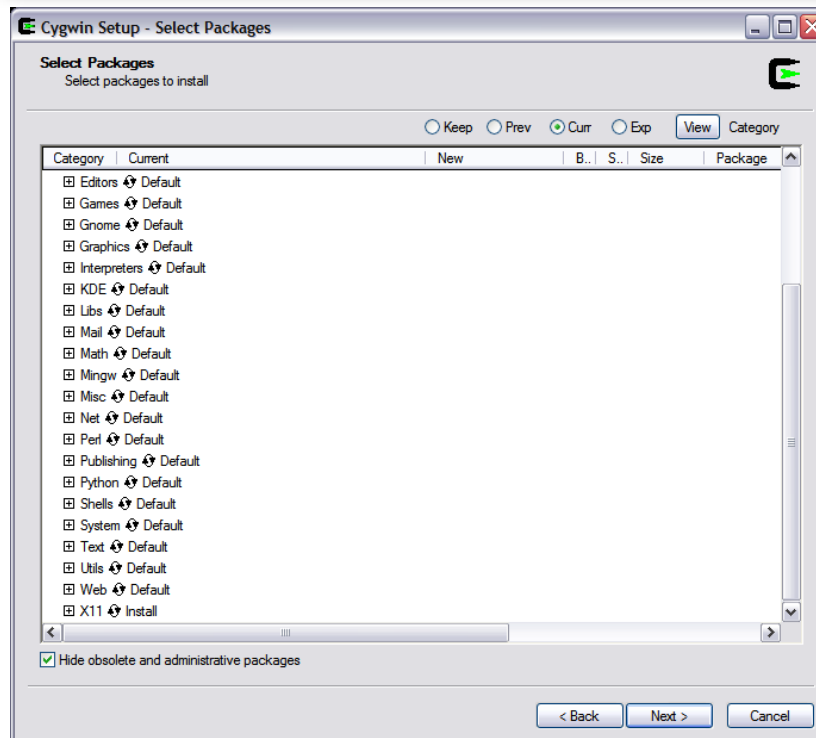
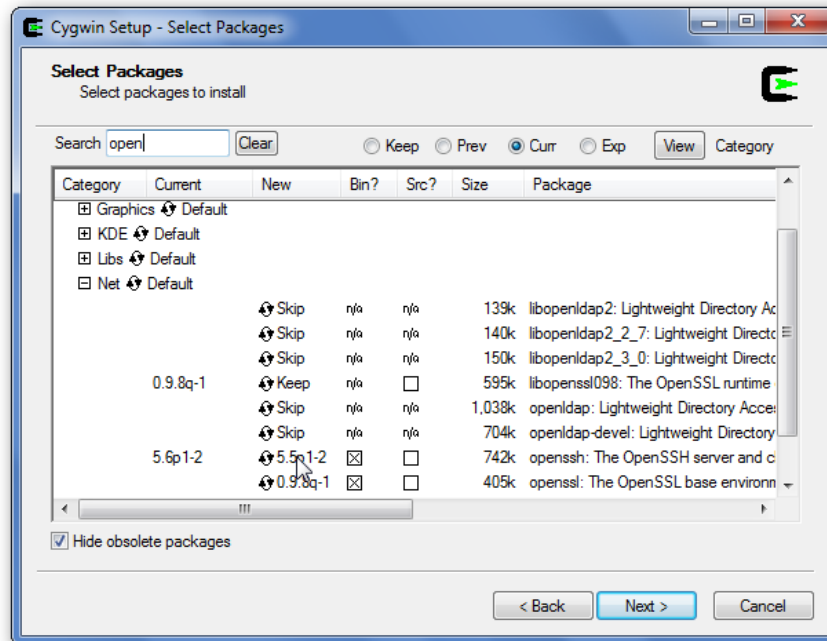
Put your netid in the username box in connection tab. Switch over to Tunneling tab and make sure to click the Tunnel X11 connections checkbox.



On Windows (using Cygwin)

Download Cygwin setup from <http://www.cygwin.com/>.

During the package selection screen in installation make sure to select openssh in Net subcategory and the X11 subcategory are installed



Start the Cygwin shell prompt and use the Linux commands to connect.