

# Accessing Omega (With X-Windows Support)

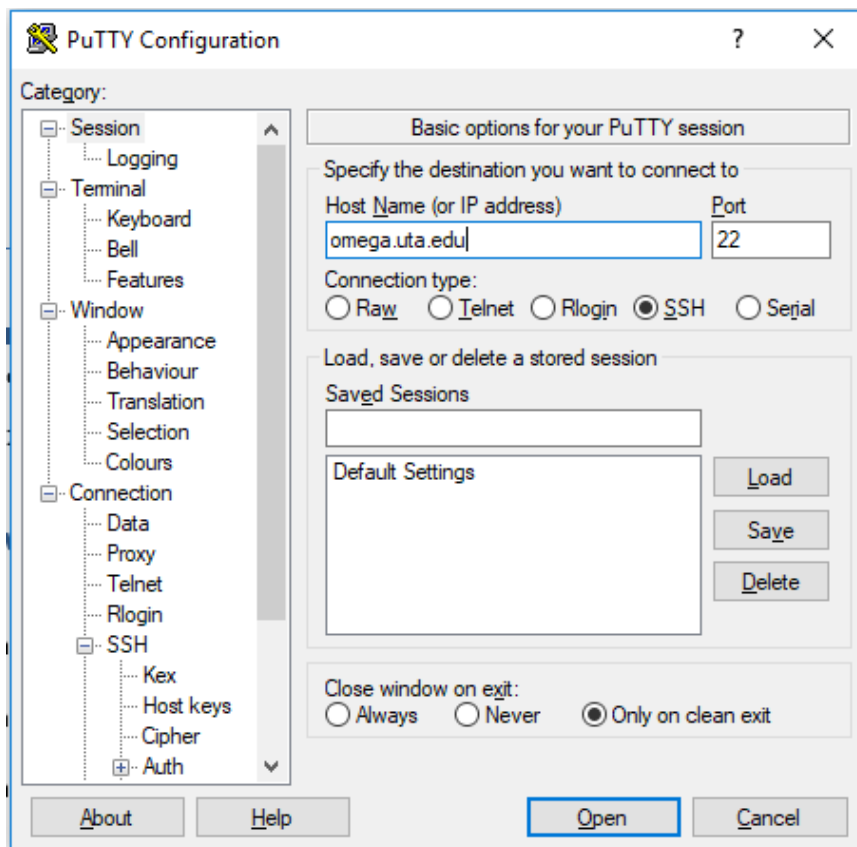
## On Linux and Mac

You can access omega with x-windows support using the command in a terminal

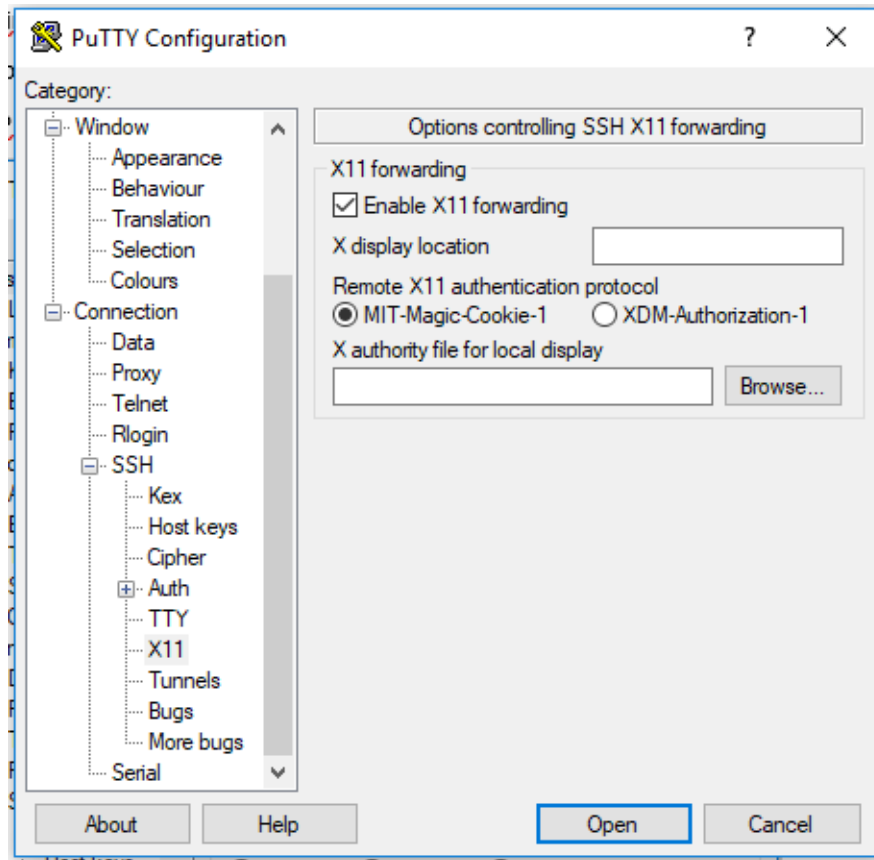
```
ssh -X <net-id>@omega.uta.edu
```

## On Windows (using PuTTY, Xming and WinSCP)

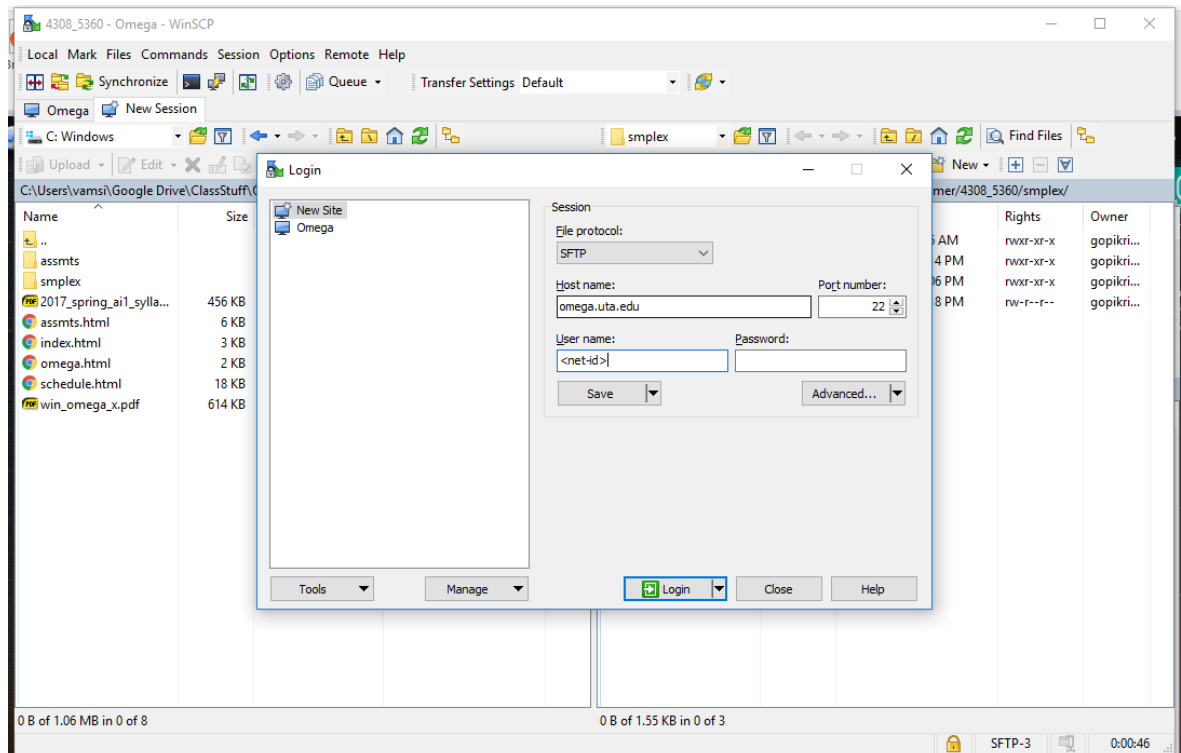
- Download and install PuTTY from <http://www.putty.org/>
- Download and install Xming from <http://sourceforge.net/projects/xming/>.
- Download and install WinSCP from <https://winscp.net/eng/index.php>
- Start Xming using XLaunch or default Xming shortcut. (You will need to do this every time you restart your computer before using PuTTY)
- Startup PuTTY and use omega.uta.edu as hostname and SSH as connection type



- In Connection → SSH → X11, Enable X11 Forwarding



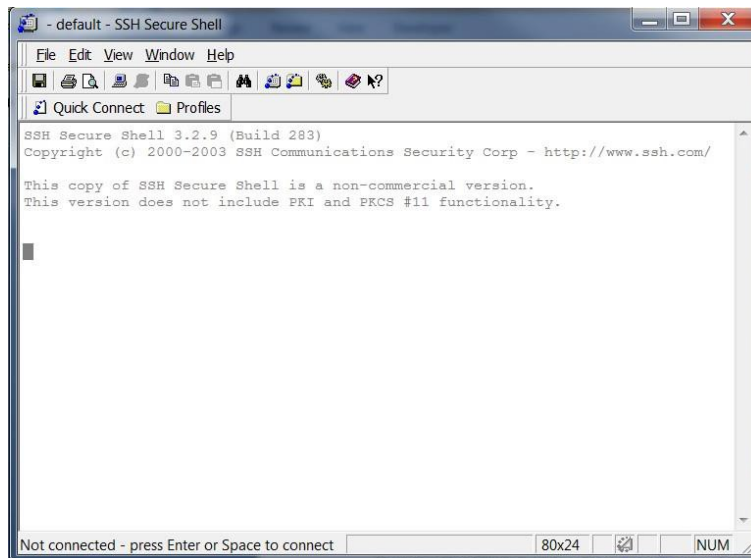
- Click open and login using net-id and password.
- To transfer files to omega, use WinScp



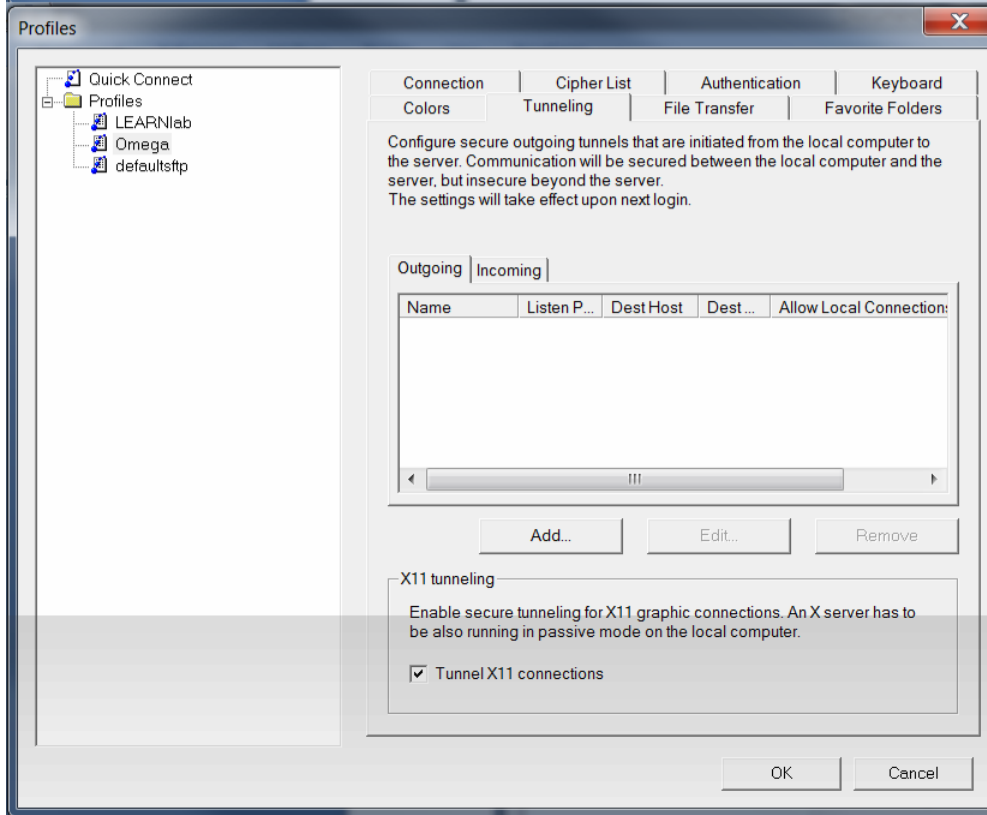
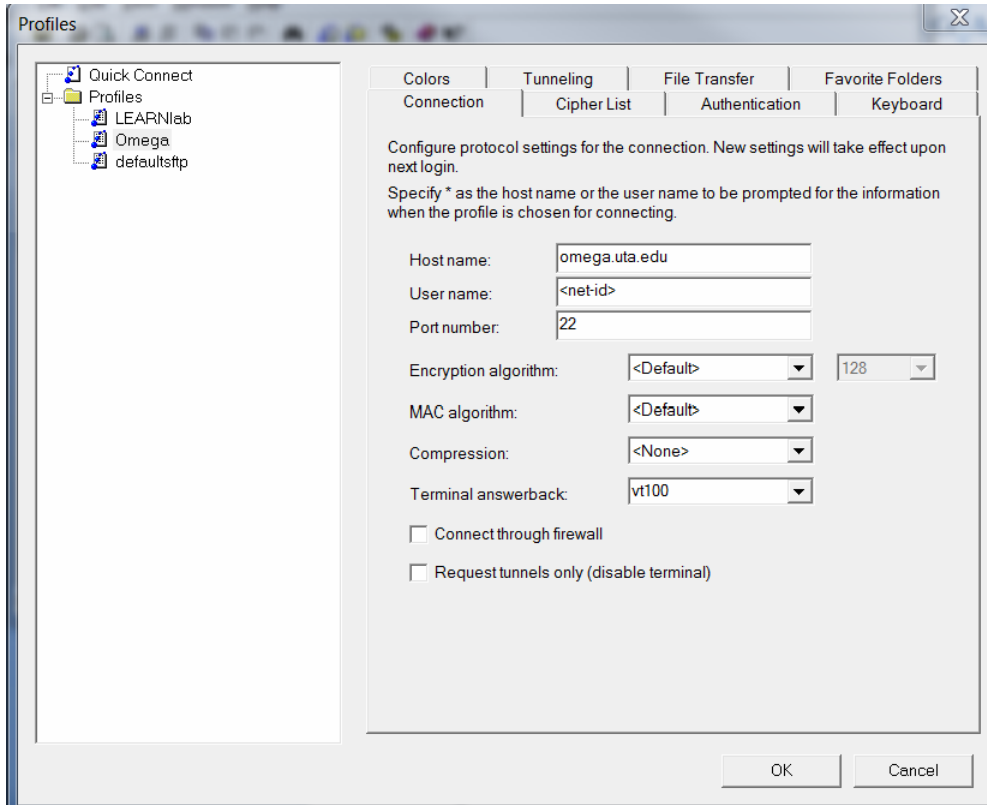
## On Windows (using SSH Client and Xming)

**Note:** This method is currently having issues. May be fixed at a later date. Use one of the other methods in the meantime.

- Download and install the SSH Client from <http://www.uta.edu/oit/cs/software/downloads.php>.
- Download and install Xming from <http://sourceforge.net/projects/xming/>.
- Start Xming using XLaunch or default Xming shortcut. (You will need to do this every time you restart your computer before using SSH Client)
- Startup SSH Client

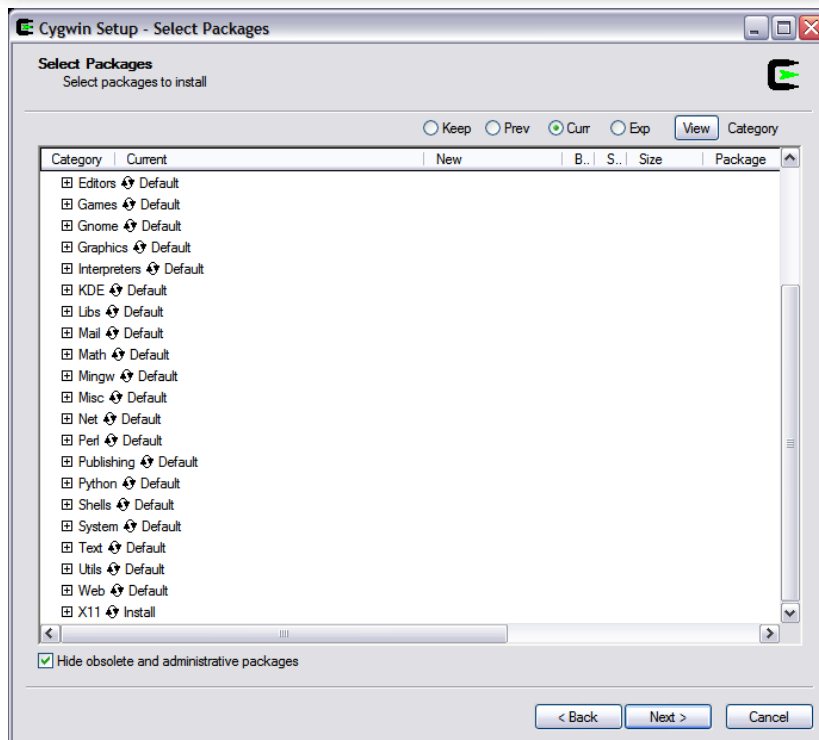
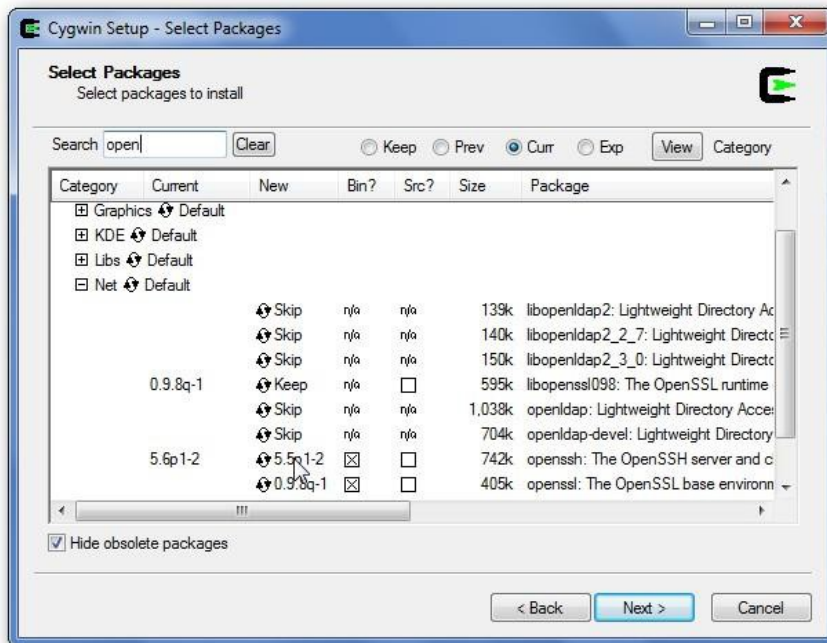


- Add a new Profile using Profiles → Add Profile. Then go to profile settings using Profiles → Edit Profiles
- Put your netid in the username box in connection tab. Switch over to Tunneling tab and make sure to click the Tunnel X11 connections checkbox.



## On Windows (using Cygwin)

- Download Cygwin setup from <http://www.cygwin.com/>.
- During the package selection screen in installation make sure to select openssh in Net subcategory and the X11 subcategory are installed



- Start the Cygwin shell prompt and use the Linux commands to connect.