

Accessing Omega (With X-Windows Support)

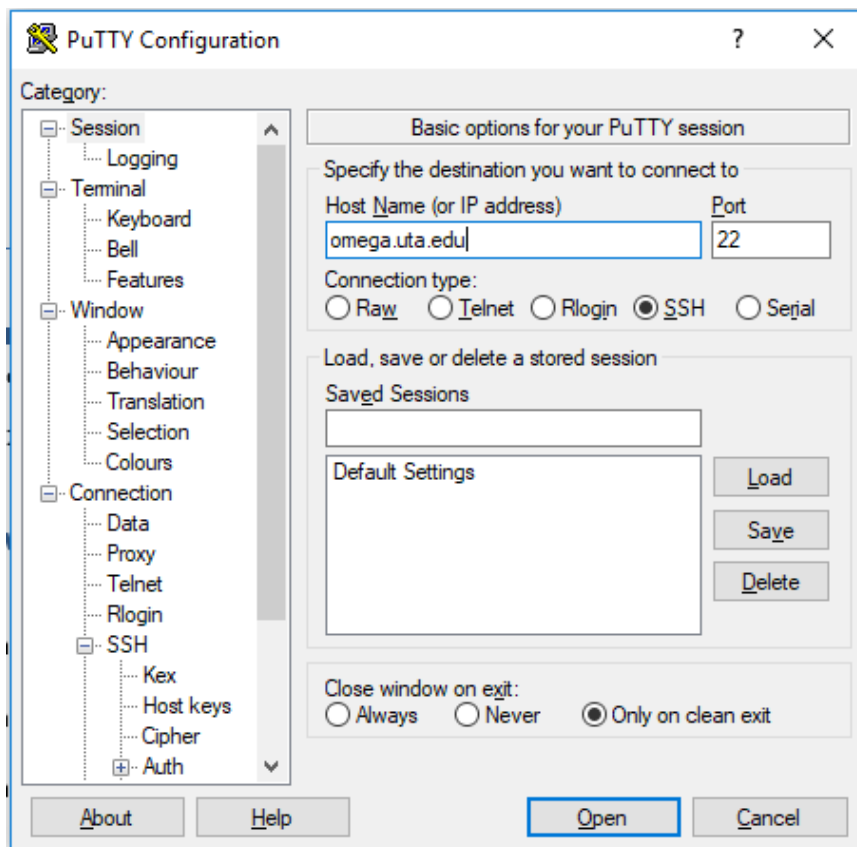
On Linux and Mac

You can access omega with x-windows support using the command in a terminal

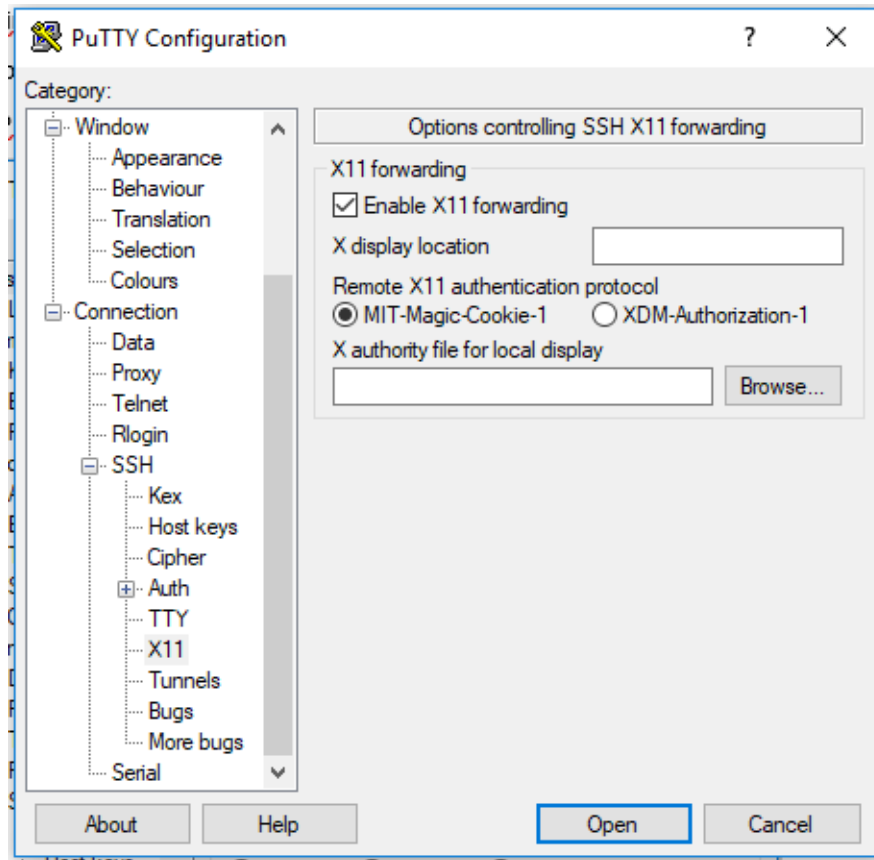
```
ssh -X <net-id>@omega.uta.edu
```

On Windows (using PuTTY, Xming and WinSCP)

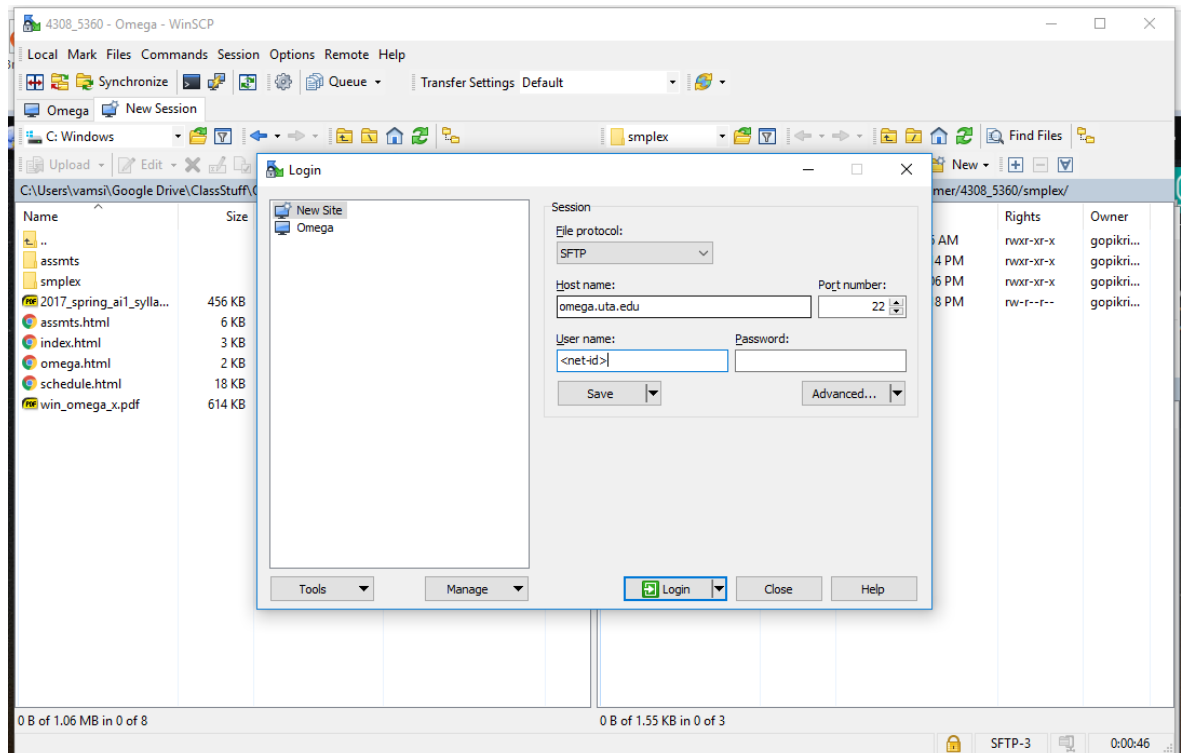
- Download and install PuTTY from <http://www.putty.org/>
- Download and install Xming from <http://sourceforge.net/projects/xming/>.
- Download and install WinSCP from <https://winscp.net/eng/index.php>
- Start Xming using XLaunch or default Xming shortcut. (You will need to do this every time you restart your computer before using PuTTY)
- Startup PuTTY and use omega.uta.edu as hostname and SSH as connection type



- In Connection → SSH → X11, Enable X11 Forwarding

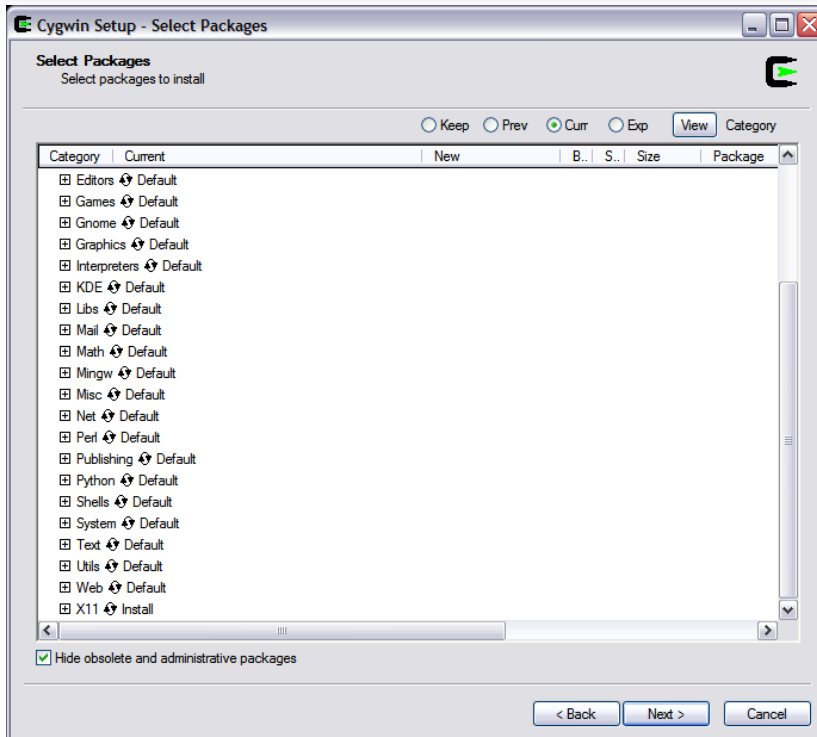
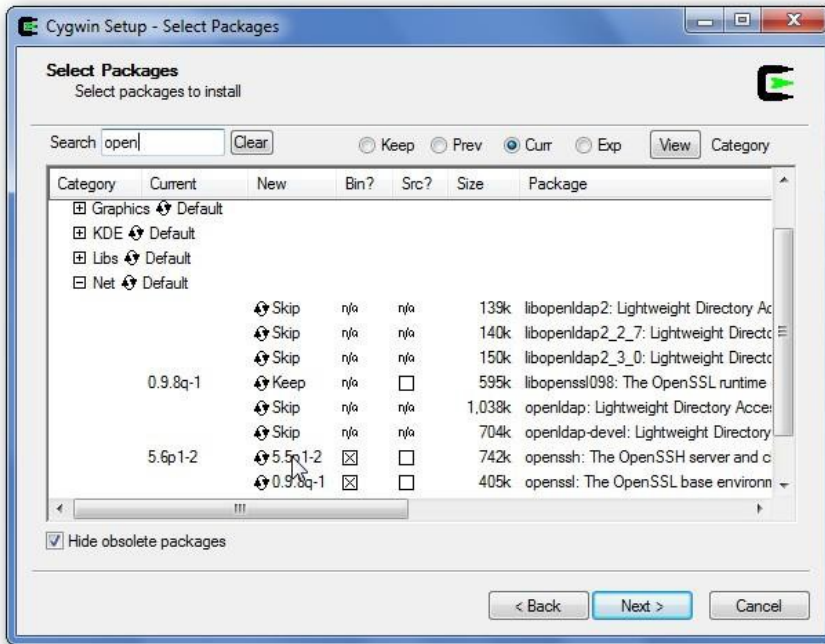


- Click open and login using net-id and password.
- To transfer files to omega, use WinScp



On Windows (using Cygwin)

- Download Cygwin setup from <http://www.cygwin.com/>.
- During the package selection screen in installation make sure to select openssh in Net subcategory and the X11 subcategory are installed



- Start the Cygwin shell prompt and use the Linux commands to connect.